

Ghost Kit (SKU 10001)

Technical Specification Sheet V1.0

PRODUCT DESCRIPTION

Since 2013, the Dr.Dabber Ghost™ has been a staple in the dabbing world. This vape pen was the first product we offered at the inception of our company. One of the first pens made specifically for concentrates, the Ghost™ set the standard for convenient, low heat dabbing.

Award Winning Tech

The Ghost™ has won countless awards, including multiple High Times Best Vaporizer Pen Awards. Our Titanium Technology heats to the ideal temperature slowly allowing for maximum flavor while avoiding burnt and unpleasant hits. The Ghost's atomizer is ceramic lined with medical grade titanium coils creating a smooth and potent draw. The Ghost's battery provides up to 50 full heating cycles on a single charge and can be fully charged within an hour. This battery is also compatible with most 510 threaded oil cartridges.



Figure 1: The Ghost Kit with packaging and full contents displayed.

Table 1: Ghost Kit Overview.

Specification	Value
Individual Unit Dimensions	5.875 x 3.1 x 2 in
Individual Unit Weight	8 oz
Individual Unit MSRP	\$69.95

PRODUCT COMPONENTS

The Dr. Dabber Ghost includes the following components: each can be individually ordered as replacement parts or accessories for the Dr. Dabber Ghost.

- Ghost - Battery (SKU 100014)
- Ghost - Atomizer (SKU 10003) **QTY = 2 when in kit**
- Ghost - Mouthpiece (Not for Purchase)
- Ghost - USB Charger (SKU 100015)
- Loading Tool (SKU 120106)
- Shatterproof Storage Ball (SKU 100013)

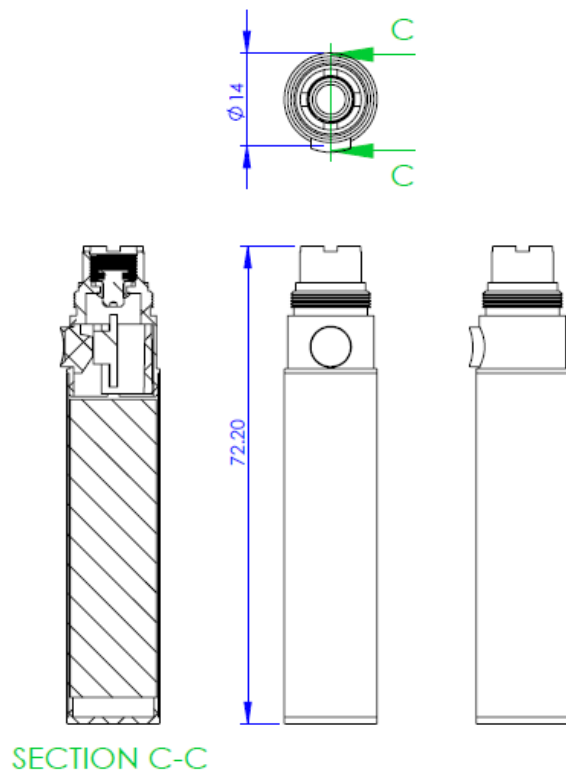
Specifications for each product are broken down in this document. If additional information is needed, please contact support@drdabber.com.



Figure 2: Components of the Ghost Vaporizer Pen - from Left to Right; Ghost Battery, Ghost Atomizer, Ghost top, Ghost Charger, Dr. Dabber Loading Tool, Shatterproof Storage Ball.

GHOST - BATTERY – SPECIFICATIONS

The Dr. Dabber Ghost Battery is a full sized 510 threaded battery that operates off a single button, which also acts as the LED indicator that is used to indicate functions such as: on/off, heating, and low battery. The Dr. Dabber Ghost is also compatible with most 510 cartridges. The Dr. Dabber Ghost Battery can only be charged through the 510 connection and is recommended to only be charged with the Ghost USB Charger. The battery cell in the Ghost Battery meets UN 38.3 certification ensuring safety of the batteries during shipping.



SECTION C-C

Figure 4: Diagram and dimensions of the Ghost - Battery.
All dimensions are in mm.

Table 3: Ghost - Battery specifications and features.

Specification	Value
Battery Cell	Li-Polymer 13450D
Battery Capacity	700 mAh
Cell Discharge Voltage	3.0 V
Cell Charge Voltage	4.2 V
Charger Port Type	510 Threaded Charger
Activation	Push Button
LED Indicator	LED Button

GHOST - MOUTHPIECE – SPECIFICATIONS

The Dr. Dabber Ghost Mouthpiece includes both a long metal pipe that helps cool vapor that is produced from the atomizer, and cigar style mouthpiece for ease of use.

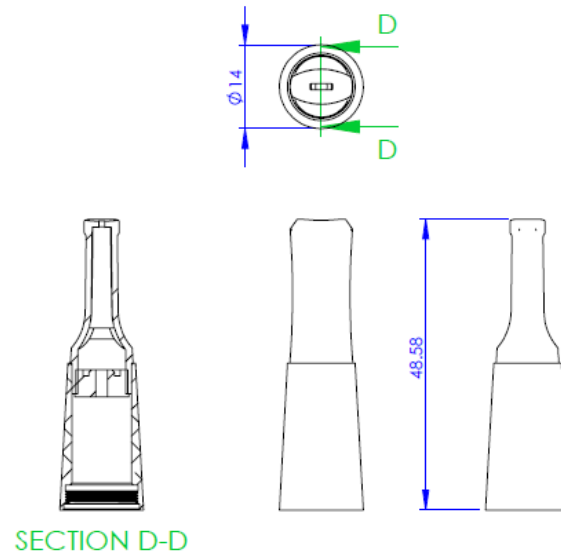


Figure 5: Diagram and dimensions of the Ghost - Mouthpiece. All dimensions are in mm.

GHOST - ATOMIZER – SPECIFICATIONS

The Dr. Dabber Ghost Atomizer is 510 threaded and utilizes a nichrome heating filament wrapped around a silica wick. Temperature is maintained by both the battery and the heating filament's positive temperature coefficient. Airflow is directed from the base of the atomizer through the filament promoting high amounts of vapor. The Ghost Atomizer wick allows for a larger amount of loading than the Light Atomizer.

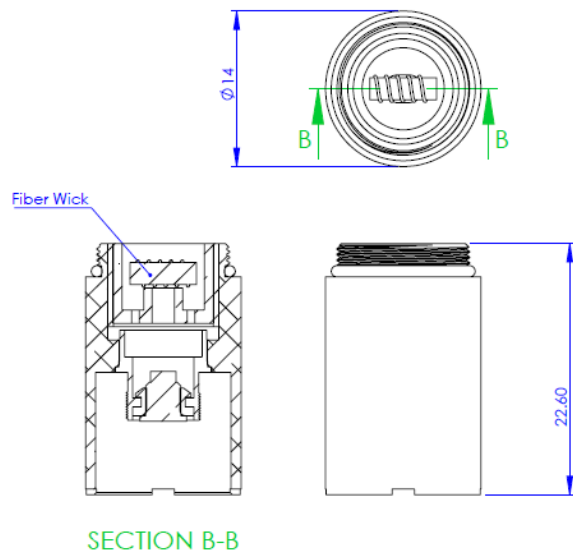


Table 4: Ghost - Atomizer specifications and features.

Specification	Value
Wicking Material	Silica Wick
Heating Filament	Nichrome
Filament Resistance	2.0 Ω
Temperature Control	Positive Temp. Coefficient

*Figure 6: Diagram and dimensions of the Ghost - Atomizer.
All dimensions are in mm.*

GHOST - USB CHARGER – SPECIFICATIONS

The Dr. Dabber Ghost USB Charger can be plugged into most USB Type A receptacles, such as those found in most laptops, cars, and phone chargers. The charger has a short cable allowing for users to use the cable with some flexibility. The charger has a single LED indicating charging status, with RED indicating charging, and GREEN indicating fully charged.

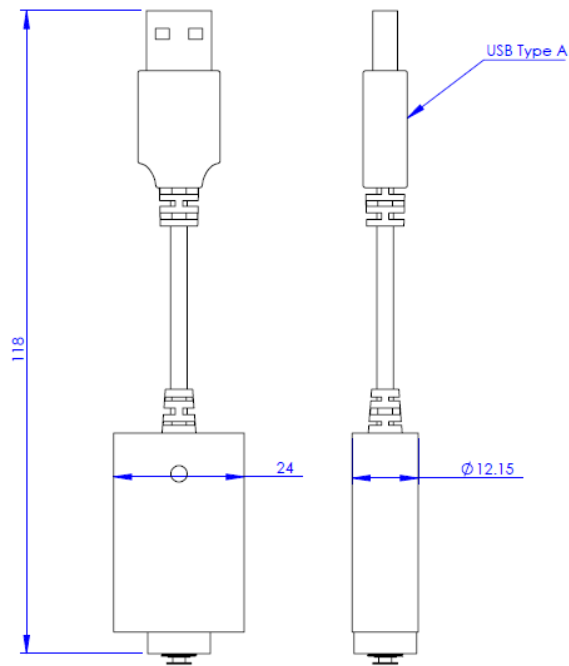


Figure 7: Diagram and dimensions of the Ghost - USB Charger. All dimensions are in mm.

Table 5: Ghost - USB Charger specifications and features.

Specification	Value
Input Port	USB Type A
Output Port	510 Threaded Charging Port
Input Voltage	5.0 V
Input Amperage	420 mA
Output Voltage	4.2 V
Output Amperage	420 mA
Charger Protection	Over-Charge, Over-Voltage Protection
LED Indicator	Single LED

LOADING TOOL – SPECIFICATIONS

The Dr. Dabber Loading Tool is our basic loading tool included with such products as the Ghost, Stella, and Light. The loading tool is ideal for loading small amounts of concentrate into an atomizer, and includes a small keyring hole.

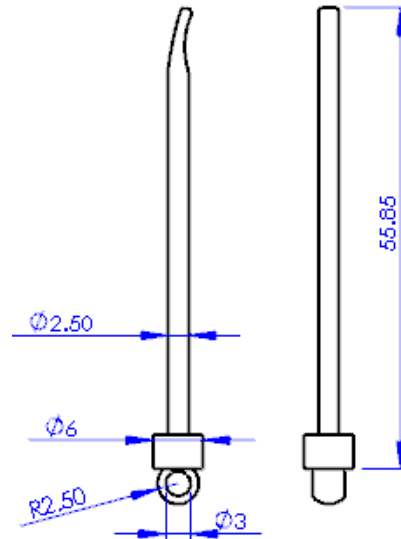


Figure 8: Diagram and dimensions of the Dr. Dabber Loading Tool. All dimensions are in mm.

SHATTERPROOF STORAGE BALL – SPECIFICATIONS

The Dr. Dabber Shatterproof Storage Ball, is a platinum cured food grade silicone storage container which can be used for storing concentrates.

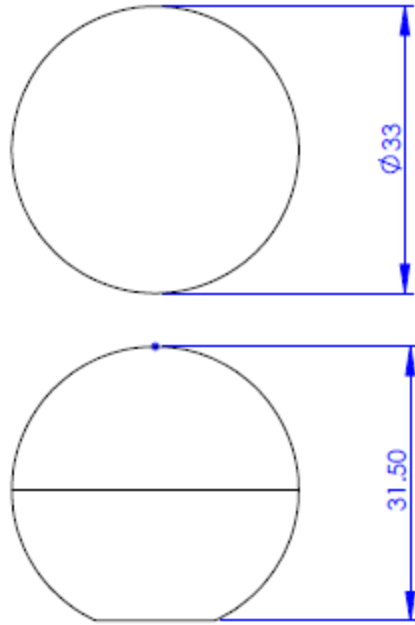


Figure 9: Diagram and dimensions of the Dr. Dabber Shatterproof Storage Ball. All dimensions are in mm.

Stella Kit (SKU 120100)

Technical Specification Sheet V1.0

PRODUCT DESCRIPTION

Engineered for Precision-Crafted out of black stainless steel for an elegant but durable look and feel, the Stella sets the standard for a premium vaporizer pen. With three heat settings and a preheat/soak mode, you will be able to find the perfect temp for any type of concentrate. The battery provides up to 40 full heating cycles on a single charge and comes with pass-through charging, so you may continue to use your pen while it charges.

Stella atomizers are fully ceramic with no exposed coils and are fitted with a floating vaporization chamber to optimize performance. The floating chamber reduces the contact of the chamber with the rest of the body of the pen, reducing heat transfer to the user's hand and helps focus heat to the vaporization chamber. Stella atomizers are long lasting and stay at a constant temp throughout the heating process to ensure maximum flavor with minimal waste.

The Dr.Dabber Stella is what dabbing on-the-go was always meant to be!



Figure 1: Stella Kit unit with packaging (Left). The Stella full pen (Right).

Table 1: Stella Kit Overview

Specification	Value
Individual Unit Dimensions	6.25 x 3.25 x 1.25 in
Individual Unit Weight	6.7 oz
Individual Unit MSRP	\$99.95

PRODUCT COMPONENTS

The Stella Kit includes the following components: each can be individually ordered as replacement parts or accessories for the Stella.

- Stella - Battery (SKU 120101)
- Stella - Atomizer (SKU 120103)
- Stella - Mouthpiece (N/A, Refer to Stella Replacement Top SKU 120104)
- USB-C Cable - Short (SKU 120107)
- Loading Tool (SKU 120106)

Specifications for each product are broken down in this document. If additional information is needed, please contact support@drdabber.com.



Figure 2: Components of the Stella from left to right; Stella - Battery, Stella - Atomizer, Stella - Mouthpiece, Dr. Dabber Loading Tool, and Stella USB-C Charger.

STELLA - BATTERY – SPECIFICATIONS

The Dr. Dabber Stella Battery is a powerful yet small battery that operates off a single button. The battery includes 3 temperature settings, along with a pre-heat setting. The Stella Battery features pass-through charging through its USB-C Port. The battery has an LED indicator at its base and on the bottom, which are used to indicate different functions, such as: on/off, heating, low battery, and different temperature settings. Although the Stella Battery is 510 threaded, it does not output a constant voltage and is not ideal for using with 510 cartridges. The battery cell in the Stella Battery meets UN 38.3 certification ensuring safety of the batteries during shipping.

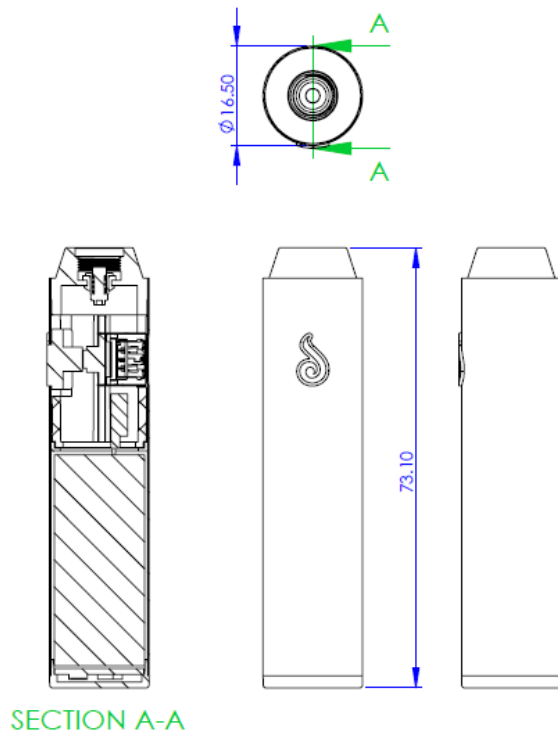


Figure 3: Diagram and dimensions of the Stella - Battery.
All dimensions are in mm.

Table 2: Stella - Battery specifications and features.

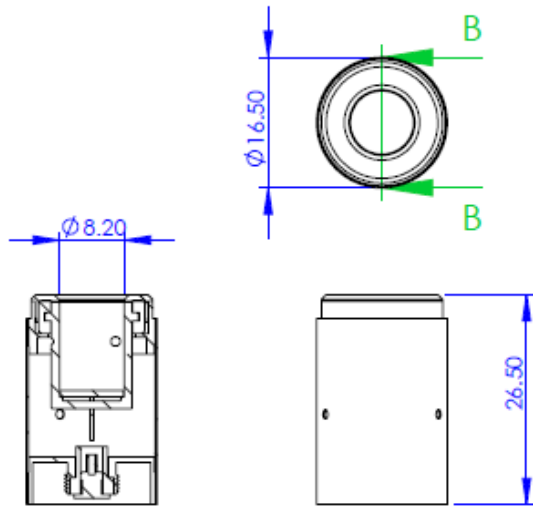
Specification	Value
Battery Cell	Li-Polymer 15350
Battery Capacity	700 mAh
Cell Discharge Voltage	3.0 - 4.2 V
Cell Charge Voltage	4.2 - 5.0
Charger Port Type	USB-C
Voltage Settings	3 Settings + 1 Pre-Heat Setting
Activation	Single Push Button
LED Indicator	On Button and Base

STELLA - ATOMIZER – SPECIFICATIONS

The Dr. Dabber Stella Atomizer utilizes a ceramic heating element with an embedded heating filament. Temperature is maintained by both the battery and the heating filament's TCR temperature control programmed into the Stella Battery. The heating element is located at the base of an alumina ceramic dish, which can be loaded with 0.2 - 0.3 grams of concentrate prior to use. The floating chamber and heating element are "floating" in the atomizer, with only minimal contact with the atomizer body, to prevent heat absorbing into the atomizer and the battery. The Stella Atomizer magnetically connects to the Stella Mouthpiece, and has threading for connecting to the Stella Battery.

Table 3: Stella - Atomizer specifications and features.

Specification	Value
Heating Chamber Material	Alumina Ceramic
Heating Element Material	Alumina Ceramic w/ Embedded Element
Heating Element Resistance	0.5 Ω
Temperature Control	Temp. Coeff. Resist.



SECTION B-B

*Figure 4: Diagram and dimensions of the Stella - Atomizer.
All dimensions are in mm.*

STELLA - MOUTHPIECE– SPECIFICATIONS

The Dr. Dabber Stella Mouthpiece is a high quality mouthpiece made from steel and with a platinum cured food grade silicone filter to help regulate airflow and prevent oil reaching the user during inhalation. The Stella Mouthpiece magnetically snaps onto the Stella Atomizer.

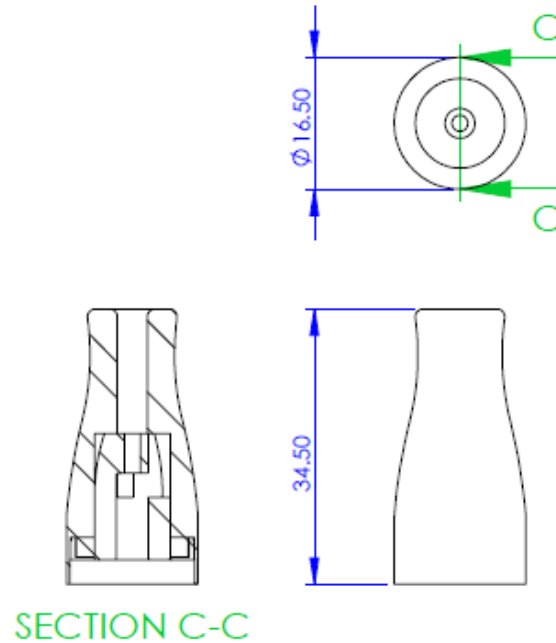


Figure 5: Diagram and dimensions of the Stella - Mouthpiece. All dimensions are in mm.

USB-C CABLE - SHORT – SPECIFICATIONS

The Dr. Dabber Short USB-C Cable is a 30cm long charging cable with a Type A and a Type C connector on each end. The cable is designed for charging, and not for data transmission.

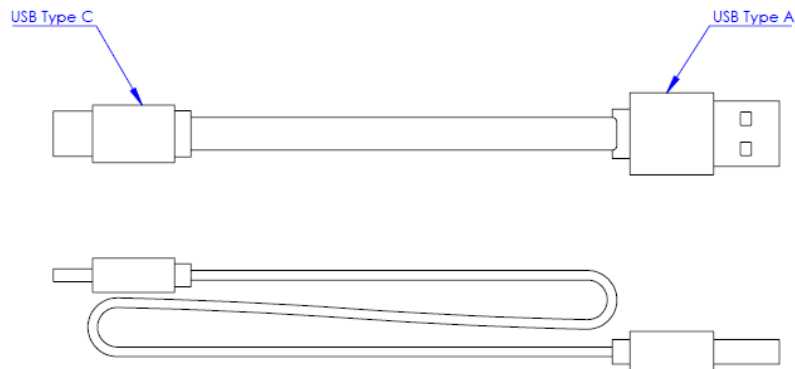


Figure 5: Diagram and dimensions of the Dr. Dabber USB-C Cable - Short. All dimensions are in mm.

LOADING TOOL – SPECIFICATIONS

The Dr. Dabber Loading Tool is our basic loading tool included with such products as the Ghost, Stella, and Light. The loading tool is ideal for loading small amounts of concentrate into an atomizer, and includes a small keyring hole.

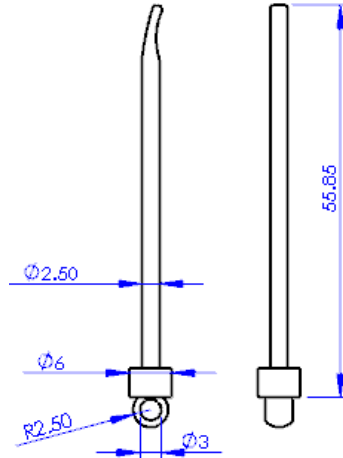


Figure 6: Diagram and dimensions of the Dr. Dabber Loading Tool. All dimensions are in mm.

SWITCH Kit (SKU 100900)

Technical Specification Sheet V1.0

PRODUCT DESCRIPTION

Far from average. Dr.Dabber has worked tirelessly, exploring what is needed most in a vaporizer and disregarding anything we feel is unnecessary for the perfect eRig experience. Spearheading the induction heating movement, we have stepped away from past technologies and into the realm of the future. Take total control over your consumption, without sacrificing performance or power. Say goodbye to replacing your atomizers. Welcome, the Dr.Dabber SWITCH.

Consistent enough to vaporize top-tier solventless, with no terpene degradation. Powerful enough to run through any dried leaf materials. The SWITCH's 25 different heat settings will keep you dialed into any level of consumption, from the casual to the connoisseur. Our patent-pending induction technology enables the Switch to achieve temperature in under 10 seconds (dependent on selected temperature). Let us see your parent's vaporizer do that! We encased the induction heating within the glass to allow for simple cleaning and carefree use. Simply fill the well with isopropyl alcohol, wiping clean to remove all residues from inside. We designed the SWITCH with the internal electronics completely sealed off so you don't have to worry about leakage causing mechanical failure. We stand by all of our vaporizers and offer a 2-Year warranty on every SWITCH purchased.



Figure 1: SWITCH Kit packaging (Left). The SWITCH Kit opened with all contents (Right).

Table 1: Switch-Switch Kit Overview

Specification	Value
Master Case Qty	4
Master Case Dimensions	70 x 35 x 31 in
Master Case Weight	27 lbs
Individual Unit Dimensions	13 1/8 x 6 3/4 x 11 3/8 in
Individual Pack Weight	6.8 lbs
Individual Pack MSRP	\$374.95

PRODUCT COMPONENTS

The Dr. Dabber SWITCH includes the following components: some can be individually ordered as replacement parts or accessories for the Dr. Dabber SWITCH.

- SWITCH - Main Unit (Not for Purchase)
- SWITCH - Battery Pack (SKU 100906)
- SWITCH - Charging Cable and Adapter (SKU 100907)
- SWITCH - Induction Cup - Leaf (SKU 100908)
- SWITCH - Induction Cup - Oil (SKU 100909)
- SWITCH - Ceramic Filter (SKU 100903)
- SWITCH - Marble Carb Cap (SKU 101907)
- SWITCH Glass - Glass Attachment (SKU 100901)
- SWITCH - Glass Attachment Silicone Seal - Black (SKU 100901-01)
- SWITCH - Carb Cap Silicone Seal - Black (SKU 100904-02)
- SWITCH - Induction Cup Tweezers (SKU 100905)
- SWITCH - Silicone Storage Case (Not for Purchase)
- Pro Loading Tool - Black (SKU 101906)

Specifications for each product are broken down in this document. If additional information is needed, please contact support@drdabber.com.



Figure 2: Components of the Switch- from Left to Right; Switch-Battery Pack, Switch-Charging Cable, Switch-Induction cup (Leaf), Switch-Induction cup (Oil), Switch-Ceramic Filter, Switch-Marble Card Cap, Switch-glass attachment seal, Switch-Carb Cap Silicone Seal, Switch Glass-Glass Attachment, Switch-Induction Cup Tweezers, Pro Loading Tool, Switch-Silicone Storage Case

SWITCH - MAIN UNIT – SPECIFICATIONS

The SWITCH Main Unit is a powerful eRig that houses the operational and induction heating circuitry. The SWITCH includes two standard modes, Leaf and Oil, each with five temperature settings for user's to become acquainted with the device. The SWITCH also includes a Pro Mode for Leaf and Oil, with 25 temperature settings, along with a Crystal Pro Mode with 25 temperature settings. The base of the SWITCH opens up revealing a battery compartment. The SWITCH's top acts as a 50/50 ground glass joint to connect glass attachments too. Five LEDs at the front of the device, as well as LEDs in the glass top illuminate to indicate different functions. The SWITCH can be charged with a SWITCH CHarging Cable and Adapter that connects to its Barrel Plug Connector at the rear of the device, and allows for pass-through charging.

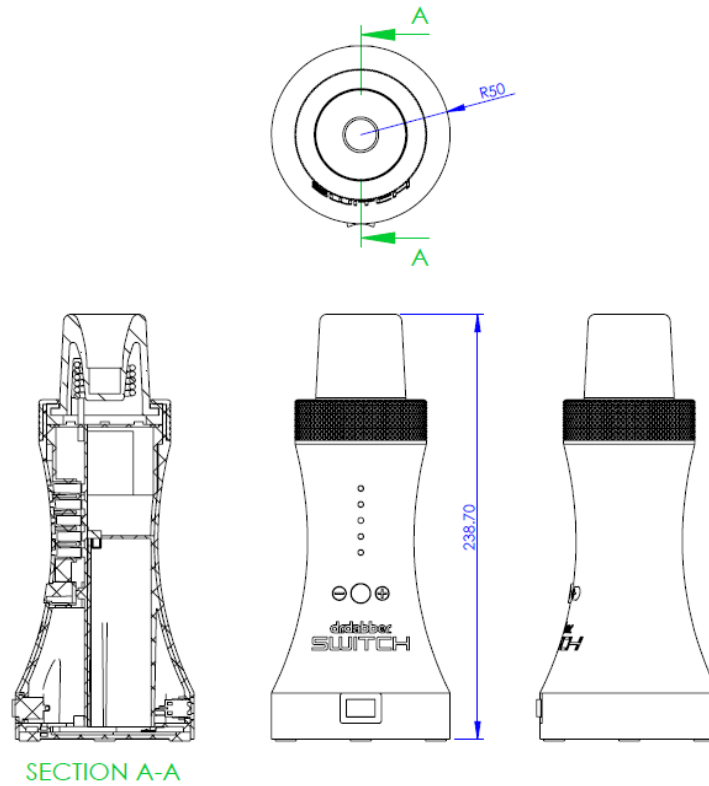


Figure 3: Diagram and dimensions of the SWITCH - Main Unit. All dimensions are in mm.

Table 3: SWITCH - Main Unit specifications and features.

Specification	Value
Power Source	SWITCH Battery Pack
Charging Port	Barrel Plug Connector
Heating Type	Induction
Heating Modes	Leaf, Oil, and Crystal
Temperature Settings	25 for each Setting
Activation	Multiple Push Buttons to Activate
LED Indication	LED at Top and 5 LEDs in Front

SWITCH - BATTERY PACK – SPECIFICATIONS

The SWITCH Battery Pack is a proprietary battery pack designed for the SWITCH with built in battery protection. Each battery pack includes a circuit board with a battery management system designed to protect the battery and the user in case of unsafe or unpredictable conditions. The SWITCH Battery Pack meets UN 38.3 certification ensuring safety of the batteries during shipping.

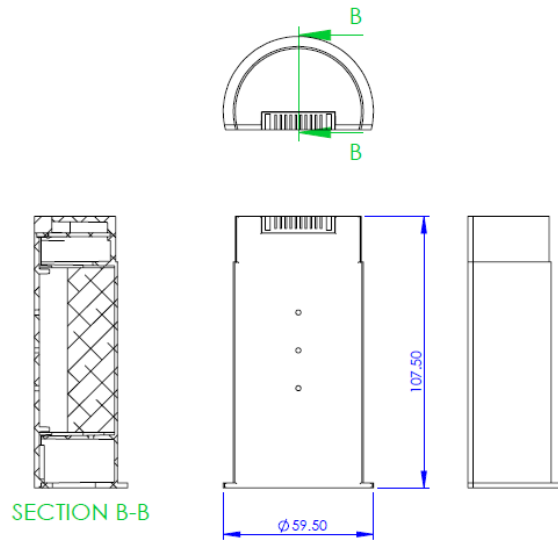


Figure 4: Diagram and dimensions of the SWITCH - Battery Pack. All dimensions are in mm.

Table 4: SWITCH - Battery Pack specifications and features.

Specification	Value
Battery Cell	3x INR18650 HQ
Battery Capacity	3,000 mAh
Battery Discharge Voltage	7.5 V
Battery Charge Voltage	12.6 V
Battery Protection	Over-Discharge, Over-Charge, Over-Temperature, Short Circuit

SWITCH - CHARGING CABLE AND ADAPTER – SPECIFICATIONS

The SWITCH Charging Cable and Adapter, is a two piece set which includes a power adapter, and a connector cable for a Type A power outlet (the standard power outlet in the US and Canada). The power adapter is rated for standard voltage/amperage outputs common in US, Canada, and European countries, and comes with built in protection to ensure no overloading or short circuit.

European adapters are also available, for purchase by contacting support@drdabber.com

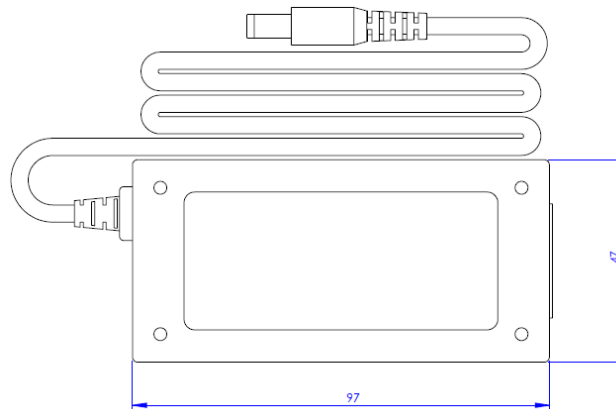


Figure 5: Diagram and dimensions of the SWITCH - Charging Adapter, cable dimensions not features. All dimensions are in mm.

Table 5: SWITCH Charging Cable and Adapter specifications and features.

Specification	Value
Input Port	Type A (Standard US Outlet)
Output Port	Barrel Plug
Input Voltage	AC 100V~120V/175V~245V
Input Amperage	1.4A~1.5 A
Output Voltage	12.6 V
Output Amperage	3.0 A
Charger Protection	Overloading, Short Circuit
LED Indicator	Single LED

SWITCH - INDUCTION CUP - LEAF/OIL – SPECIFICATIONS

The SWITCH Induction Cups that come standard with a SWITCH are composed of grade 2 (GR2) titanium, with a ceramic coating. The ceramic coating is alumina ceramic based, and is black in color for Leaf, and white in color for Oil. The ceramic coating is unglazed, and has a roughened surface to promote vaporization.

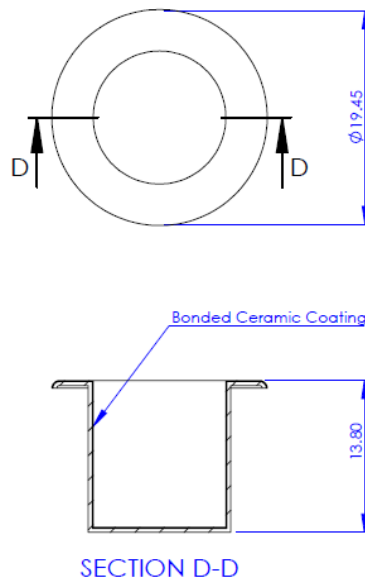


Figure 6: Diagram and dimensions of the SWITCH - Induction Cup. Leaf and Oil cups have the same dimensions. All dimensions are in mm.

SWITCH - CERAMIC FILTER – SPECIFICATIONS

The SWITCH Ceramic Filter is designed to be used with Leaf Induction Cups in Leaf Mode, and is used to prevent flower particulates from escaping from the induction cup during use. The Ceramic Filter is made from high grade alumina ceramic.

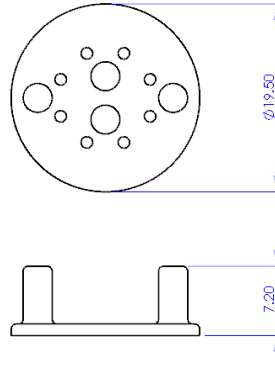


Figure 7: Diagram and dimensions of the SWITCH - Ceramic Filter. All dimensions are in mm.

SWITCH - MARBLE CARB CAP – SPECIFICATIONS

The SWITCH Marble Carb Cap is a directional carb cap carefully designed for ideal vaporization of oils and flowers in use with the SWITCH. It is highly recommended that the Carb Cap Silicone Seal is used with the SWITCH Marble Carb Cap to promote maximum vaporization.

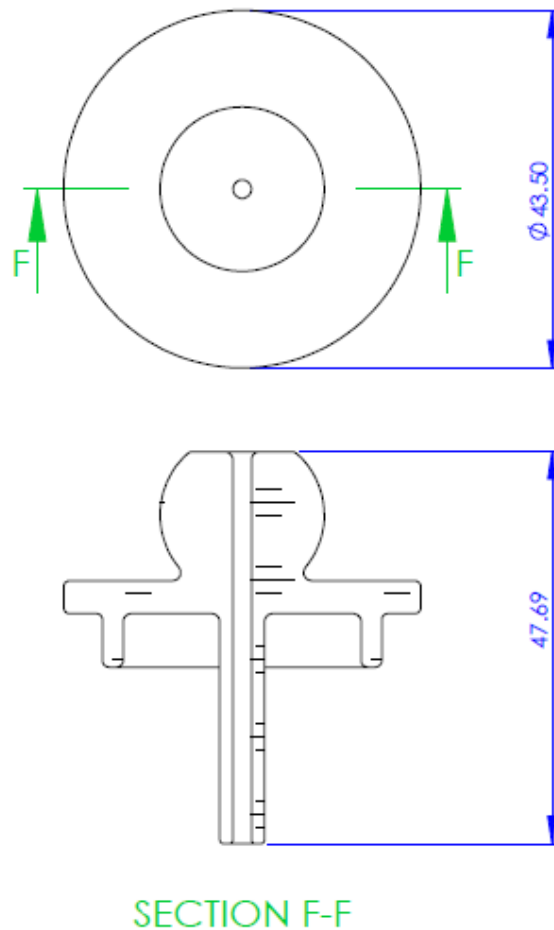


Figure 8: Diagram and dimensions of the SWITCH - Marble Carb Cap. All dimensions are in mm.

SWITCH - GLASS ATTACHMENT– SPECIFICATIONS

The SWITCH Glass Attachment is composed of a 50/50 glass fitting that has a side-car style glass attachment. The glass fitting also includes a carb cap opening at top allowing users to access their induction cups and choose to either hot or cold load with the device. The glass attachment achieves percolation using a tree percolator, designed for ideal use with either oil or flower. It is recommended that the SWITCH Glass Attachment is used with the Glass Attachment Silicone Seal to promote maximum vaporization.

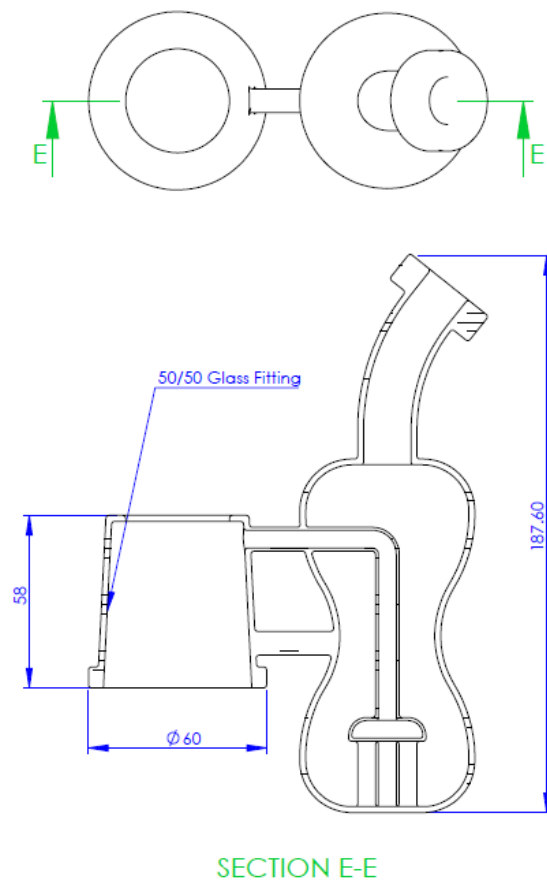


Figure 9: product images needed here

SWITCH - GLASS ATTACHMENT SILICONE SEAL – SPECIFICATIONS

The SWITCH Glass Attachment Silicone Seal is composed of platinum cured food grade silicone, and connects to the base of the SWITCH Glass Attachment to ensure an airtight seal.

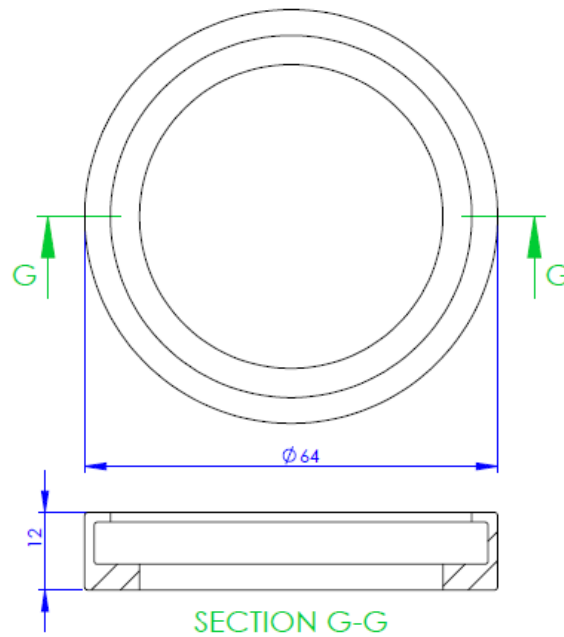


Figure 10: Diagram and dimensions of the SWITCH - Glass Attachment Silicone Seal. All dimensions are in mm.

SWITCH - CARB CAP SILICONE SEAL – SPECIFICATIONS

The SWITCH Carb Cap Silicone Seal is composed of platinum cured food grade silicone, and can be added to a SWITCH Marble Carb Cap to allow for a wide range of control over directional airflow, as well as an airtight seal.

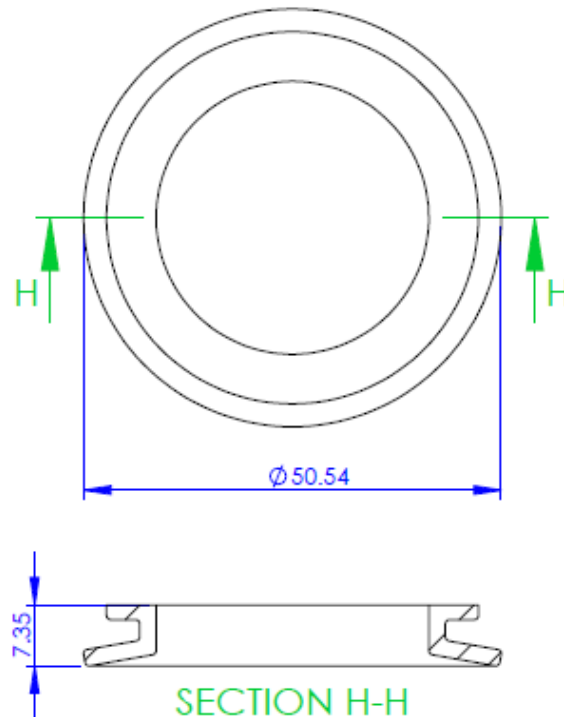


Figure 11: Diagram and dimensions of the SWITCH - Carb Cap Silicone Seal. All dimensions are in mm.

SWITCH - INDUCTION CUP TWEEZERS – SPECIFICATIONS

SWITCH Induction Cup Tweezers are a reverse action tweezer, with platinum cured silicone tips, designed to grip SWITCH Induction Cups when placed inside the SWITCH top.

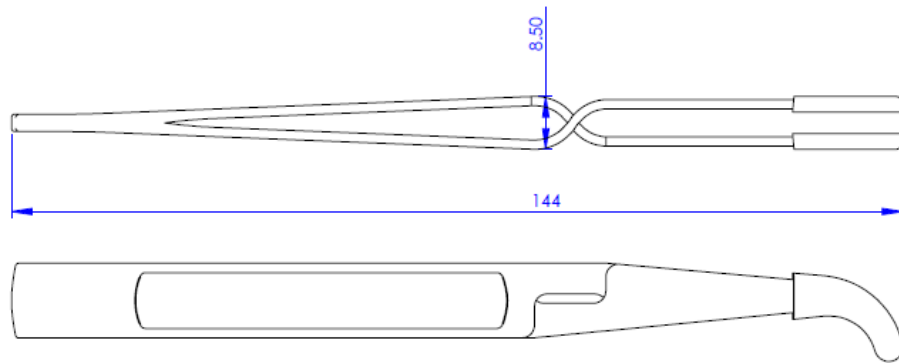


Figure 12: Diagram and dimensions of the SWITCH - Induction Cup Tweezers. All dimensions are in mm.

SWITCH - SILICONE STORAGE CASE – SPECIFICATIONS

The SWITCH Silicone Storage Case, is a platinum cured food grade silicone case, with two compartments for storing concentrate, or which can be used as a small placement to place hot induction cups between uses.

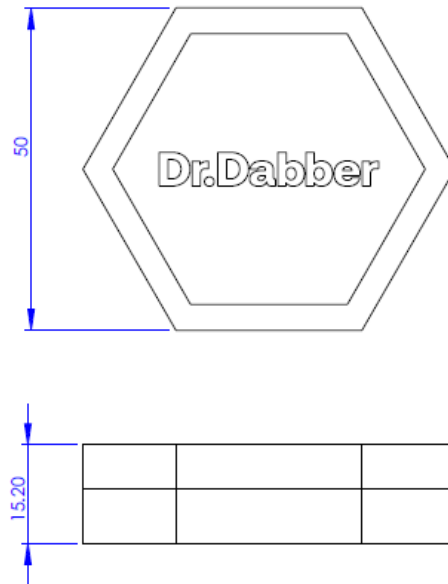


Figure 13: Diagram and dimensions of the SWITCH - Silicone Storage Case. All dimensions are in mm.

PRO LOADING TOOL– SPECIFICATIONS

The Dr. Dabber Pro Loading Tool is our premium loading tool included with such products as the SWITCH, and the Boost EVO. This lightweight aluminum loading tool includes a CNC machined tip with both a concave and flat side, designed to be used with different types of concentrates. The loading tool is ideal for loading small to large amounts of concentrate, and includes a small keyring hole.

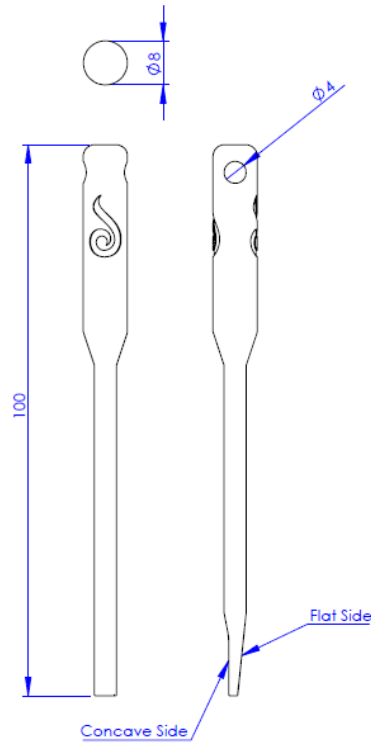


Figure 14: Diagram and dimensions of the Dr. Dabber Pro Loading Tool. All dimensions are in mm.